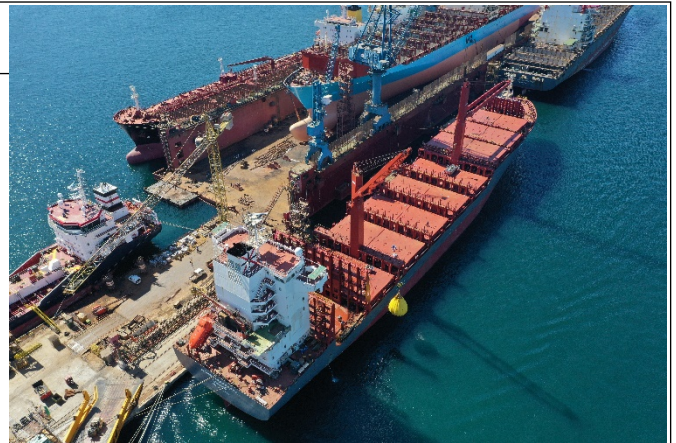




POCKET PLAN

MV HANSA HORNEBURG

IMO No.: 937 34 86



GENERAL

Date delivered / Builder (where built)	September 2007 / Guangzhou Wenchong Shipyard Company, Ltd.
Flag / Port of Registry	Liberia / Monrovia
Call sign	A8ND5
Yard type	Wenchong 1700
Type of hull	Double Hull

CLASSIFICATION

Classification society	DNV
Class notation	+100 A5 E Container ship BWM SOLAS-II-2, Reg.19, IW + MC E AUT EP-D

MAIN ENGINES

Type	MAN / B+W 7S60 MCC
MCR	16600 kW



OWNERSHIP AND OPERATION

<p>Registered owner – Full style</p>	<p>Schiffahrts-Gesellschaft "HORNEBURG" mbH & Co. KG Neumuehlen 13 22763 Hamburg Germany P +4940361460 M operations@leonhardt-blumberg.com W www.leonhardt-blumberg.com</p>
<p>Technical operator – Full style</p>	<p>Leonhardt & Blumberg Shipmanagement GmbH & Co. KG Neumuehlen 13 22763 Hamburg Germany P +4940361460 M operations@leonhardt-blumberg.com W www.leonhardt-blumberg.com Company IMO#: 5979428</p>
<p>Manning Agent Officers / Crew</p>	<p>Leonhardt & Blumberg Reederei GmbH & Co. KG Neumuehlen 13 22763 Hamburg Germany P +4940361460 M crewing@leonhardt-blumberg.com W www.leonhardt-blumberg.com</p>



CONTAINER CAPACITY

Nominal	1.732 TEU	14 mts homogenous	1.275 TEU
Reefer Capacity	379 in total	whereof	120 in holds

DIMENSIONS

Length overall (LOA)	176,91 m
Length between perpendiculars (LBP)	166,41 m
Extreme breadth (Beam)	27,40 m
Moulded depth	14,30 m
Deadweight / draft	23.600 mts dwat on 10,90 m scantling draft

TONNAGES

Gross Tonnage	18.480
Net Tonnage	10.277
Suez Canal Tonnage – Gross (SCGT) / Net (SCNT)	19061/16385
Panama Canal Net Tonnage (PCNT)	16446

CARGO GEAR

Number of cranes	2	SWL max	45 mts
------------------	---	---------	--------

SPEED / CONSUMPTION

abt. 21,0 kn	abt. 64,0 mts	Design draft (9,50 m)
abt. 10,0 kn	abt. 16,0 mts	Design draft (9,50 m)
abt. 18,0 kn	abt. 58,0 mts	Scantling draft (10,90 m)
abt. 10,0 kn	abt. 17,0 mts	Scantling draft (10,90 m)